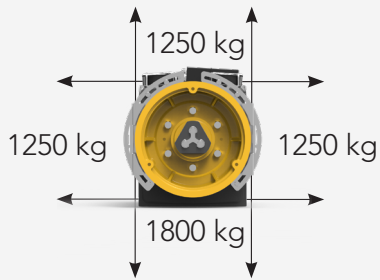


主轴静载
Static Load

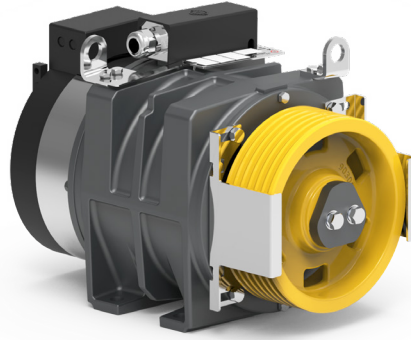


自重
Weight

120 kg

额定扭矩 Nominal Torque	阻转转矩 Short circuited torque	级数 Poles	编码器 Encoder
Nm	Nm		
215 S5-25%ED 180s/h	300	16	ERN1387 ECN1313 EI53C9.25 TS5213N2531
制动器 Brake			
EMFR DC110V/2.1A[2X400Nm]			

曳引轮直径 ØD		绳槽 Ropes		
		绳径 Ø	绳槽数 n°	槽距 Pitch
mm		mm		mm
240	79	8	3-6	12



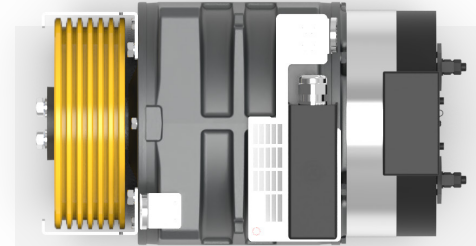
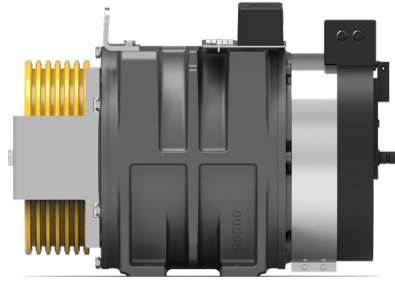
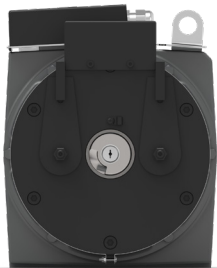
2:1	额定载重 Load		∅	绳槽 Ropes	槽距 Pitch	额定扭矩 Torque	额定功率 Power	额定转速 RPM	额定频率 Freq.	额定电流 Current 220V	额定电流 Current 380V									
	kg	m/s	mm	max	mm	Nm	kW	RPM	Hz	A	A									
260	0,3	240	3x∅8	12	85	0,43	48	6,4	4,1	2,0										
											0,4	240	3x∅8	12	85	0,57	64	8,5	4,1	2,0
320	0,3	240	3x∅8	12	122	0,61	48	6,4	5,8	2,8										
											0,4	240	3x∅8	12	122	0,81	64	8,5	5,8	2,8
											0,5	240	3x∅8	12	122	1,02	80	10,6	7,0	3,4
400	0,3	240	3x∅8	12	131	0,65	48	6,4	6,3	3,0										
											0,4	240	3x∅8	12	152	1,02	64	8,5	7,3	3,5
											0,5	240	3x∅8	12	152	1,27	80	10,6	7,3	3,5
											1,0	240	3x∅8	12	152	2,54	159	21,2	14,2	6,5
450	0,4	240	4x∅8	12	147	0,98	64	8,5	7,0	3,4										
											0,5	240	4x∅8	12	171	1,43	80	10,6	8,2	4,8
											1,0	240	4x∅8	12	171	2,86	159	21,2	16,0	7,3

1 - 数据如有更改，恕不另行通知

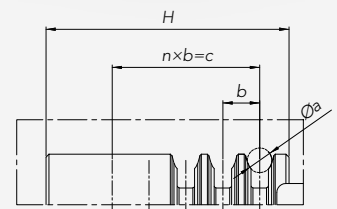
1 - Data are subject to change without prior notice

2 - 我们能够提供带电源线和不带电源线两种配置的机器

2 - We are able to offer machines with and without power cable configurations.



∅D	槽数 Grooves	∅ a	b	c	n	H	K	E	F	J	G
mm		mm	mm	mm		mm	mm	mm	mm	mm	mm
240	3	8	12	24	2	79	256	149	344	79	97,5
	4			36	3		256	149	344	73	103,5
	5			48	4		256	149	344	67	109,5
	6			60	5		256	149	344	61	115,5



DETAL Z-Z (4:1)

